



The

Criterion

Northeast Chapter - Professional Car Society

February, 1993

Dear Members:

On November 8, 1992 the Northeast Chapter held its Election Meeting at Township of Passaic Squad Building. There were 11 members in attendance.

At this meeting we welcomed new members Pete and Jan Grave.

The first item of business was elections. The current officers were re-elected for another year.

There was a lengthy discussion about collecting dues for 1993. It was decided that on 1993 dues would not be collected from current members but a membership fee of \$10.00 would be charged to new members. Sorry Pete and Jan! Just a reminder that National dues are now due.

The membership has decided that the club will pay one entry fee, per member per year, at a car show that is a club function (example: New HopeAuto Show or Englishtown Auto Show). Please see the calander of events for the dates and let Mike or Leo know if you will be entering your professional car in any of the shows that are a club function.

We would like to start a club photo album. Please send a photo of your car along with a brief history of the car. We will put the album together so when anyone attends car shows or the National Meet it can be displayed for everyone to enjoy.

Enclosed is our new Membership Roster. If you have any additions or corrections please send them to the editor.

There is a club member, David Case, that we have lost contact with. If anyone knows where he is currently living let us know.

The next edition of the Criterion will have information on the 1993 International Professional Car Society Meet in Chatham, Ontario, Canada.

February, 1993

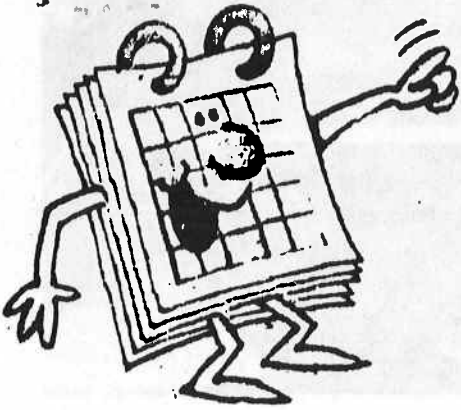
Our next meeting is an informal get together at the Allentown Spring Thaw in Allentown, Pa.. We will meet at the main entrance at 10:00 A.M. and go through the flea market. Then we will have lunch and a short meeting at a local restaurant. For more information call Leo or Mike.

One of our members, Leo Maren, has found evidence that Captain Video has expanded to the East Coast. This sign was spotted outside a video store on Rt. 31 in Clinton, New Jersey.

I would like to wish all our members a very Happy and Prosperous New Year.

Mike





CALENDAR OF EVENTS

February 27th

Mid-Atlantic Chapter Annual Dinner Meeting
York, Pennsylvania

April 3rd & 4th

Allentown Spring Thaw, Allentown, Pa.
Saturday - Fire Equipment Auction
Sunday - Flea Market

April 22nd & 23rd

Spring Carlisle, Carlisle, Pa.

May 1st & 2nd

Swap Meet, Rhinebeck, N.Y.

June 5th & 6th

Spring Car Festival, Lancaster, Ohio

June 6th

Now and Then Vehicle Club
Antique and Classic Car Show
Townshend, VT.

June 25th - 27th

Carlisle Truck Show, Carlisle, Pa.

July 30th - Aug. 1st

Summer Carlisle, Carlisle, Pa.

Aug. 4th - 8th

Professional Car Society National Meet
Chatham, Ontario, Canada

Aug. 14th & 15th

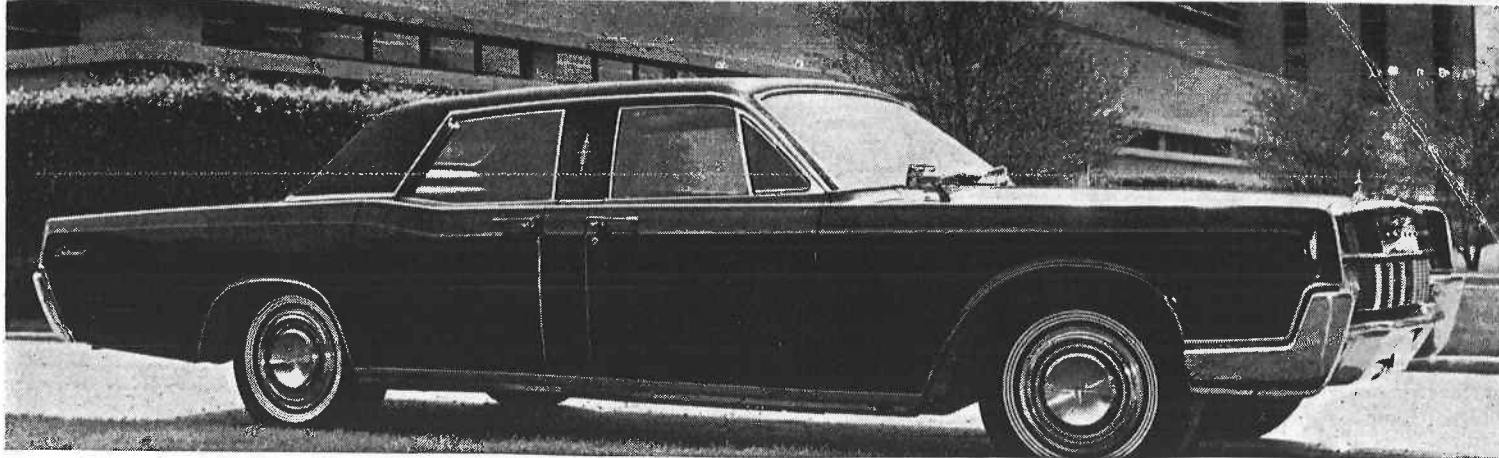
New Hope Auto Show, New Hope, Pa.
Saturday - Professional Class

Aug. 28th

Laurel Lions Car Show
Laurel Race Course, Maryland

Sept. 24th - 26th

Englishtown Auto Show and Swap Meet
Englishtown, N.J.



LEHMANN-PETERSON/LINCOLN "BABY LIMO"
=====

FORD MOTOR COMPANY MARKETED LIMOUSINES CONTINUOUSLY THRU 1942, BUT HAS OFFERED ONLY COACHBUILT LIMOS DURING TWO BRIEF ERAS SINCE. ABOUT 300 HESS & EISENHARDT STANDARD WHEELBASE LINCOLN CONVERSIONS WERE ORDERED DURING 1959 AND 1960 MODEL YEARS; AND ABOUT 500 LEHMANN-PETERSON CONVERSIONS WERE SOLD THRU LINCOLN DEALERSHIPS BETWEEN 1964 AND 1970. STANDARD L-P STRETCH WAS 34 INCHES, AND A FEW CONVERSIONS FEATURED UPHOLSTERY AND OTHER DETAILS CUSTOM BUILT TO BUYER SPECIFICATION. ABOUT 100 L-P LIMOS HAVE SURVIVED; INCLUDING BOTH OF THE 8 INCH STRETCH MARKETING EXPERIMENTS INSPIRED BY THE ROLLS-ROYCE SILVER CLOUD LONG WHEELBASE SALOONS OF THE EARLY SIXTIES.

THE MAY 1968 CAR LIFE MAGAZINE PUBLISHED THIS PHOTO OF THE 1967 L-P/LINCOLN "BABY LIMO" IN FRONT OF G D SEARLE & CO HEADQUARTERS IN SKOKIE, ILLINOIS. JOHN G SEARLE, BOARD CHAIRMAN, WAS CHAUFFEURED TO ALL BUSINESS AND SELECTED PRIVATE FUNCTIONS IN THIS SUBTLY DIFFERENT LINCOLN BY HIS EXECUTIVE TRANSIT DEPARTMENT MANAGER EARL HENSLEY. WHEN "FULLY DEPRECIATED" IN 1974, SEARLE COMPANY SOLD "BABY LIMO" TO IDLE STORAGE IN A COLLECTOR'S DAMP GARAGE. THE NEXT OWNER WAS A CARING HOBBYIST WITH NOBLE AMBITIONS, BUT VERY LIMITED RESOURCES. HARVEY SCHOFIELD FROM MARLTON, N J, PURCHASED THIS SADLY NEGLECTED LINCOLN IN 1981. A FEW DETAILS ARE RESTORED EACH YEAR, AND "BABY LIMO" WILL EVENTUALLY REGAIN THE ORIGINAL MAGNIFICENCE.

EXTERIOR OF TRIPLE BLACK "BABY LIMO" RESEMBLES A STANDARD PRODUCTION LINCOLN SEDAN; EXCEPT REAR WINDOW IS ONLY 6" X 24", AND THE CENTER DOORPOST IS 9" WIDE. THE WOOD TRIMMED DIVIDER PARTITION INCLUDES A SMALL CONSOLE WITH REAR VENTILATION AND AUDIO CONTROLS, CENTERED BETWEEN TWO FOLDING TABLES. THE FULL WIDTH PRIVACY WINDOW RETRACTS DOWN INTO THE PARTITION, RETAINING STANDARD SEDAN COMMUNICATION LEVEL WHEN DESIRED. FRONT AND REAR VENTILATION ARE INDEPENDENTLY ADJUSTABLE, AND COOL AIR TO REAR IS DISTRIBUTED THRU OVERHEAD DIFFUSERS. SEPARATE FRONT AND REAR AUDIO ENTERTAINMENT IS PROVIDED BY RADIO OR TAPE, AND ANTENNA SYSTEM PERMITS OPERATION OF A PORTABLE TELEVISION IN THE REAR WHILE IN MOTION. OFFICE LEVEL REAR LIGHTING INTENSITY PERMITS READING OR WRITING ANYTIME. UPHOLSTERY IS STANDARD PRODUCTION LINCOLN, EXCEPT FOR L-P STANDARD ARMREST STORAGE COMPARTMENT AND MOUTON REAR RUG. THE ENGINE COMPARTMENT IS ENHANCED BY CHROME COMPONENTS TYPICAL OF VARIOUS FORD FACTORY PERFORMANCE MODELS.



The Professional Car Society, Inc.

Northeast Chapter

President

Criterion Editor

Michael A. Barruzza
700 Beaver Street
Bristol, PA 19007
(215) 788-8105
(215) 788-1931 (Fax)

Vice President

Fred Goerlitz
2 Brantwood Terrace
Hackettstown, NJ 07840
(908) 852-1743

Secretary

Mary Hookway
201 Glenside Trail
Sparta, NJ 07871
(201) 729-8083

Treasurer

Membership Chairman

Leo M. Maren III
369 Chestnut Street
Stirling, NJ 07980
(908) 647-3738

Activities Director

Dan McCann, III
54 Patterson Street
Kearny, NJ 07032
(908) 223-0031

The Northeast Chapter of the Professional Car Society operates under a charter granted by the Society's Board on August 19, 1986. The Chapter serves PCS members in New Jersey, New York, and Pennsylvania. Subscription to this newsletter is by membership in the Chapter through the Membership Director listed above. Membership in the Professional Car Society, Incorporated, is a prerequisite to membership in any of its chapters.

Jeff & Mary Hookway
201 Glenside Tr.
Sparta NJ 07871



The Professional Car Society
Northeast Chapter
C/O 700 Beaver St.
Bristol, PA 19007-3823



Members Professional Cars in attendance at our last meeting
in November , 1992.
1976 M&M Cadillac Lifeliner Ambulance - Mike Barruzza
1976 Superior Cadillac Ambulance - Fred Goerlitz
1976 Superior Cadillac 54XL Ambulance - Pete Grave