



The

# Criterion

Northeast Chapter - Professional Car Society

October, 1992

Dear Members:

This newsletter is the first, of what I hope will be quarterly issues.

I will need the help of chapter members to make up coming issues as interesting as possible.

Please send me information on any cars or parts you have for sale. Also we would like to let other members see your cars. If you send a picture and information on your car we can feature a members car in each issue.

If you know of any auto shows or parades that have a professional car class let us know. We are going to put together a calendar of 1993 events that chapter members will be interested in.

I want to thank the 17 members who took the time to fill out and return the questionnaires we sent out. Unfortunately we did not hear from 28 members. If you have not taken the time to fill out the questionnaire please do so. We would like to know what activities the members are interested in.

Those of you who did not attend this years National Meet in Lebanon, Missouri missed one of the best displays of professional cars ever. One of our members, Mahlon Thompson of Cranbury, New Jersey took 3rd place in the Combination Category. CONGRATULATIONS MAHLON!!

Next years meet will be August 4,5,6 & 7th in Chatham, Ontario, Canada. You might want to plan a family vacation in Canada next year and meet some of the great people who belong to the Professional Car Society from all over the United States and Canada. There will be more information on that meet in up coming issues of this newsletter and the national newsletter.

The next meeting of the Northeast Chapter will be Nov. 8, 1992 at the Township of Passaic Squad building. We will be holding elections at this meeting.



## The Professional Car Society, Inc. Northeast Chapter

### **President**

#### **Criterion Editor**

Michael A. Barruzza  
700 Beaver Street  
Bristol, PA 19007  
(215) 788-8105  
(215) 788-1931 (Fax)

### **Vice President**

Fred Goerlitz  
2 Brantwood Terrace  
Hackettstown, NJ 07840  
(908) 852-1743

### **Secretary**

Mary Hookway  
201 Glenside Trail  
Sparta, NJ 07871  
(201) 729-8083

### **Treasurer**

#### **Membership Chairman**

Leo M. Maren III  
369 Chestnut Street  
Stirling, NJ 07980  
(908) 647-3738

### **Activities Director**

Dan McCann, Jr.  
54 Patterson Street  
Kearny, NJ 07032  
(908) 223-0031

The Northeast Chapter of the Professional Car Society operates under a charter granted by the Society's Board on August 19, 1986. The Chapter serves PCS members in New Jersey, New York, and Pennsylvania. Subscription to this newsletter is by membership in the Chapter through the Membership Director listed above. Membership in the Professional Car Society, Incorporated, is a prerequisite to membership in any of its chapters.

October, 1992

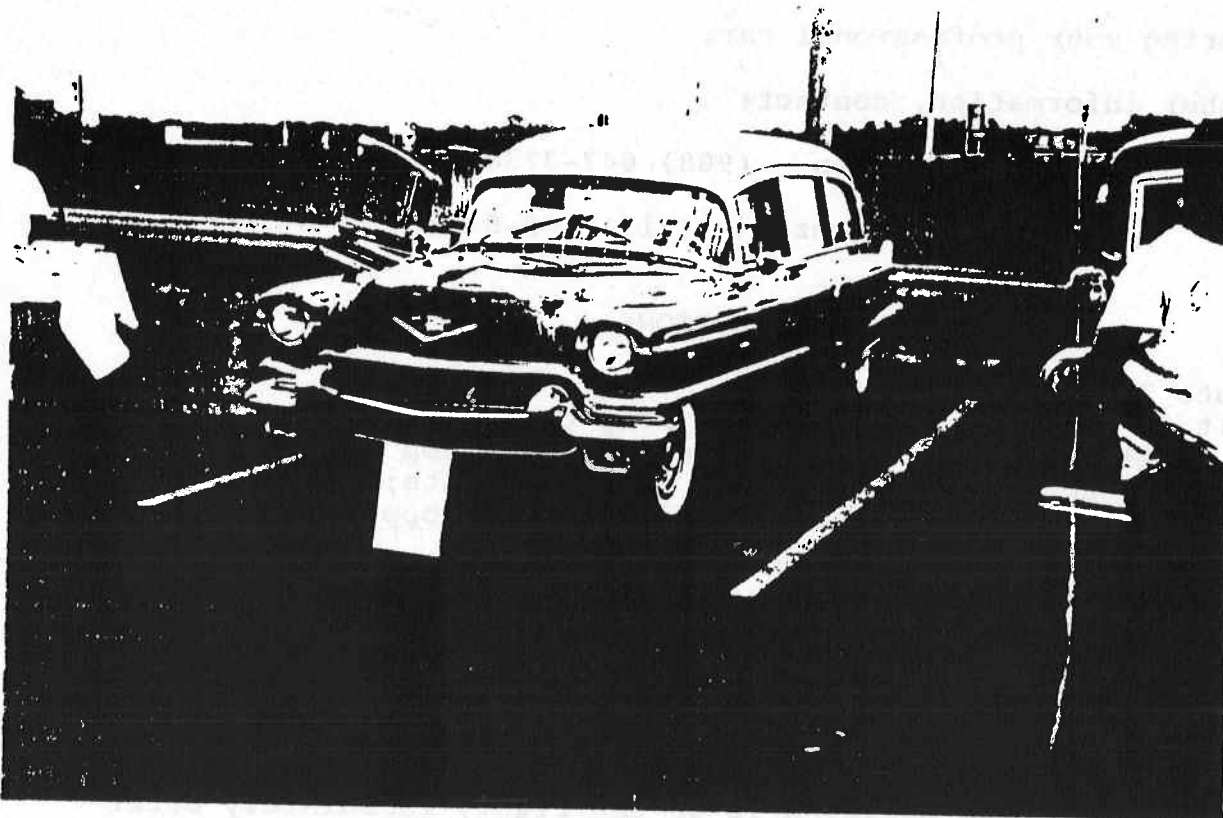
Dust off your professional car for one more outing before winter gets here. Come out and meet new friends with some of the same interests.

Directions for the Nov. 8, 1992 meeting can be found on the next page of this newsletter.

Sincerely,



Mike Barruzza, President



Mahlon Thompsons 1956 Miller combination at this years International Meet in Lebanon, Missouri

THE PROFESSIONAL CAR SOCIETY  
NORTHEAST CHAPTER

ELECTION MEETING

DATE: November 8, 1992

TIME: 1:00 P.M.

PLACE: Township of Passaic First Aid Squad Building

Your attendance at this meeting is important!

Elections will be held for every office in the chapter:

President  
Vice President  
Treasurer  
Secretary  
Activities Director

Please bring your professional car.

For further information, contact:

Leo Marren - (908) 647-3738

Mike Barruzza - (215) 788-8105

DIRECTIONS

From Route 78:

Exit 36 (from 78 East left off ramp or from 78 West right off ramp). Continue on King George Road to first stop sign; turn right onto Valley Road. Go through three traffic lights; squad building is on the right immediately after Valley Mall Shopping Center.

From Route 287 South:

Exit 26A (North Maple Avenue/Basking Ridge). Go through first traffic light. Bear left at Y onto South Maple Avenue. Continue to blinking traffic light at top of hill; bear left, following the ridge of the hill, on Long Hill Road. At first stop sign, turn right onto Central Avenue. Go over tracks; it turns into Main Avenue. At first traffic light, turn left onto Valley Road. Go through two traffic lights; squad building is on the right, immediately after Valley Mall Shopping Center.

Township of Passaic First Aid Squad Building

(201) 647-2181

BUY - SELL - TRADE

**FOR SALE OF TRADE:**

C-6 Federal Siren 6-Volt, works, good condition  
Mike Barruzza (215) 788-8105

**FOR SALE:**

Hearses and Flower Cars, 1930 - 1970, parts cars, misc. parts,  
etc.  
Ron Massey (215) 886-8163

---

**WANTED:**

For 1966 Superior Cadillac Ambulance; rear quarter panel script,  
gray floor mat part #8776093 NOS or good used, and information  
on side window decals.  
Mike Barruzza (215) 788-8105

**WANTED:**

Any parts, large or small, for 1933 S&S Buick Cathedral wood  
sided hearse.  
Ron Massey (215) 886-8163

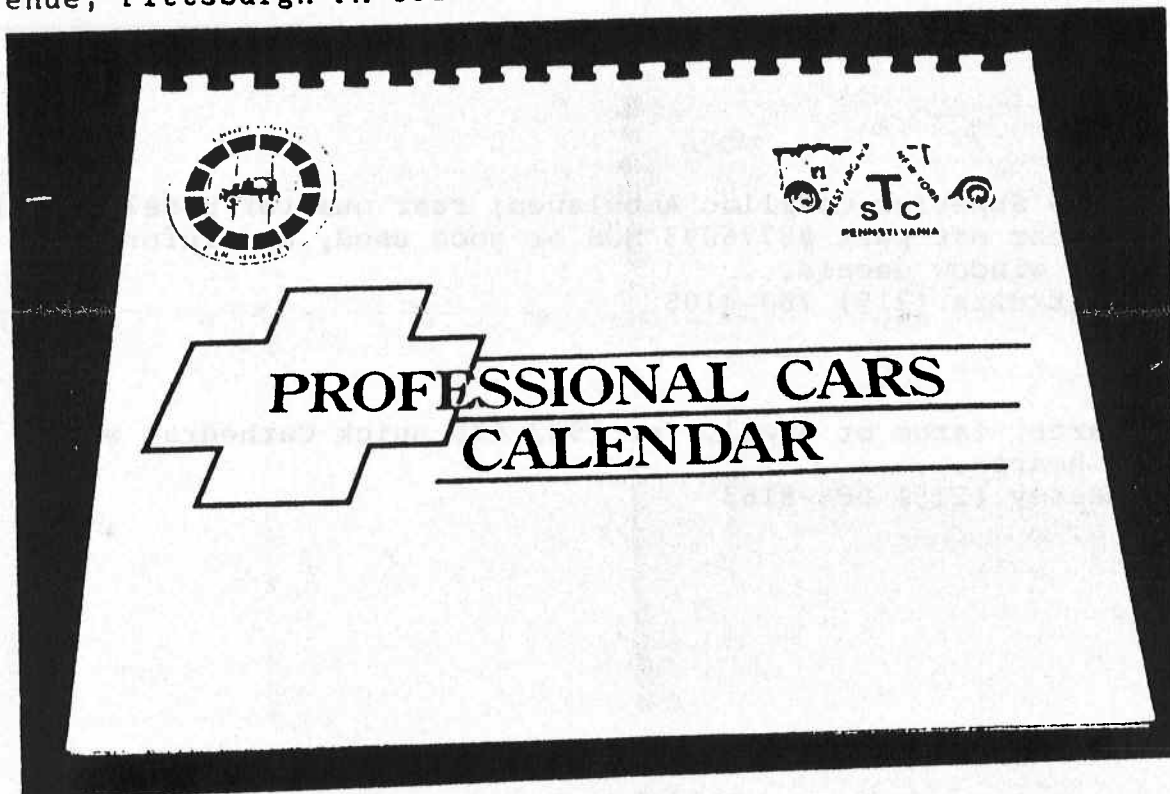
THE TRI-STATE CHAPTER WANTS YOUR CAR !

The Professional Car Society's Tri-State Chapter has reserved a page in its next Professional Car Calendar for your car!

All they need is a high-quality black and white 8 x 10 photo of your professional car. A check for \$10.00 will enable the Tri-State Chapter to process your photo, and this fee includes your copy of the calendar, including shipping.

Your help is needed to feature an interesting variety of funeral coaches, flower and service cars, combination coaches, ambulances and other professional vehicles. This is a great way to collect photos of your fellow PCS members' professional vehicles ranging from horse-drawn hearses to antique and vintage funeral cars, ambulances and limousines.

Please send your calendar candidates to John Ehmer, 1542 Princess Avenue, Pittsburgh PA 15216.



1993 Professional Car Calendars! Monthly photos of ambulances, hearses, flower cars, service cars, limousines, horse-drawn through latest 1992 models. Price \$6.50 US, \$7.00 Canadian. Send checks to: PCS Tri-State Chapter, 1542 Princess Ave., Pittsburgh PA 15216.

Ambulance Books: The Ambulance - The Story of Emergency Transportation of sick & Wounded Through The Centuries, Katherine Barkley \$13.95 soft cover, \$22.95 hard cover; American Funeral Cars & Ambulances Since 1900, Thomas A. McPherson, \$24.95; Miniature Emergency Vehicles, Ed Force, \$14.95. No shipping charge for PCS members. For more information, to order: Myron gittell, Load 'N Go Press, Box 175, Kiamesha Lake NY 12751. 914-794-3772.



*The Place To Be  
In '93*



CHATHAM, ONTARIO  
CANADA

The 17th Annual  
**PCS Meet**

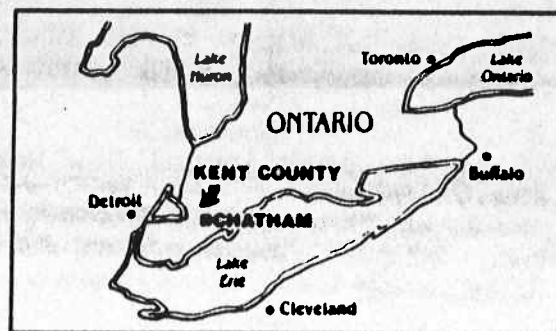
**AUGUST 4TH-8TH**

*Your Hosts: Len & Mary-An Langlois*

P.O. Box 711,  
Chatham, Ontario, Canada  
N7M 5K8

Work  
519-354-8880

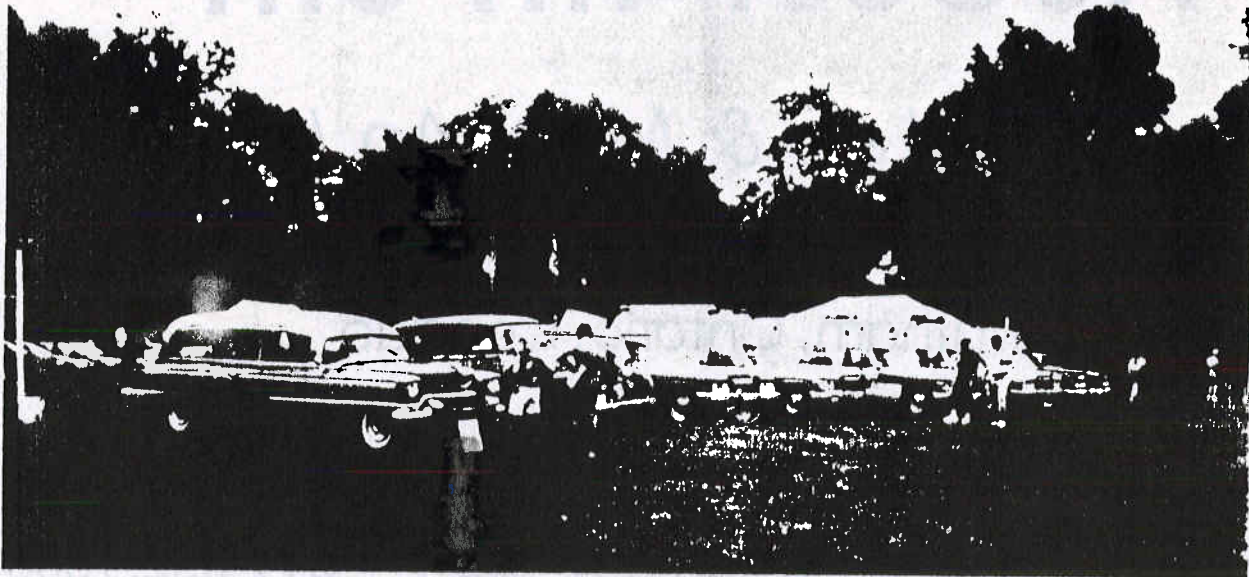
Home  
519-352-1888



Jeff & Mary Hookway  
201 Glenside Tr.  
Sparta NJ 07871



The Professional Car Society  
North East Chapter  
C/O 700 Beaver Street  
Bristol, Pa. 19007-3889



Pro Car Class at the 36th Annual New Hope  
Auto Show, Aug. 8 1992